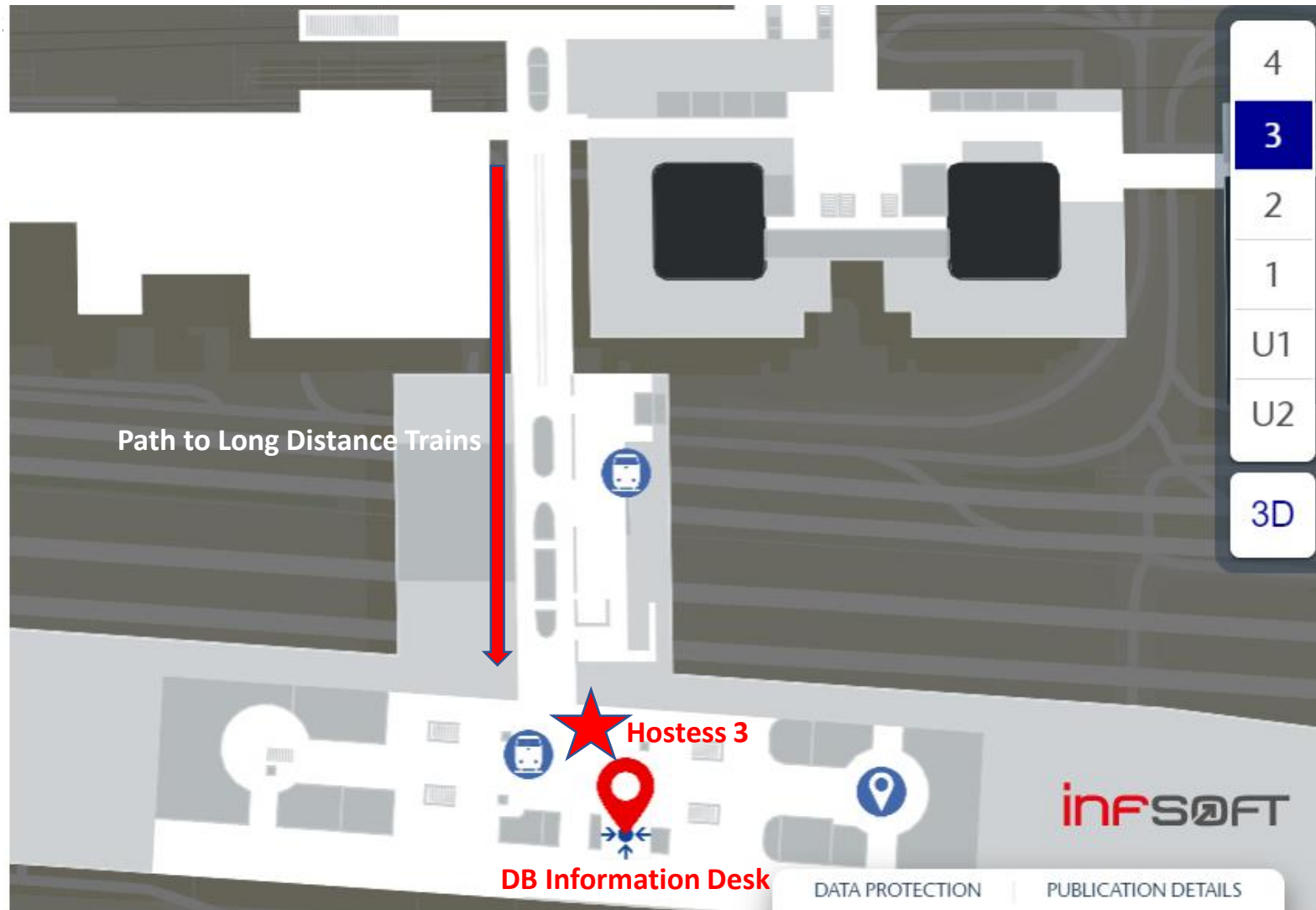
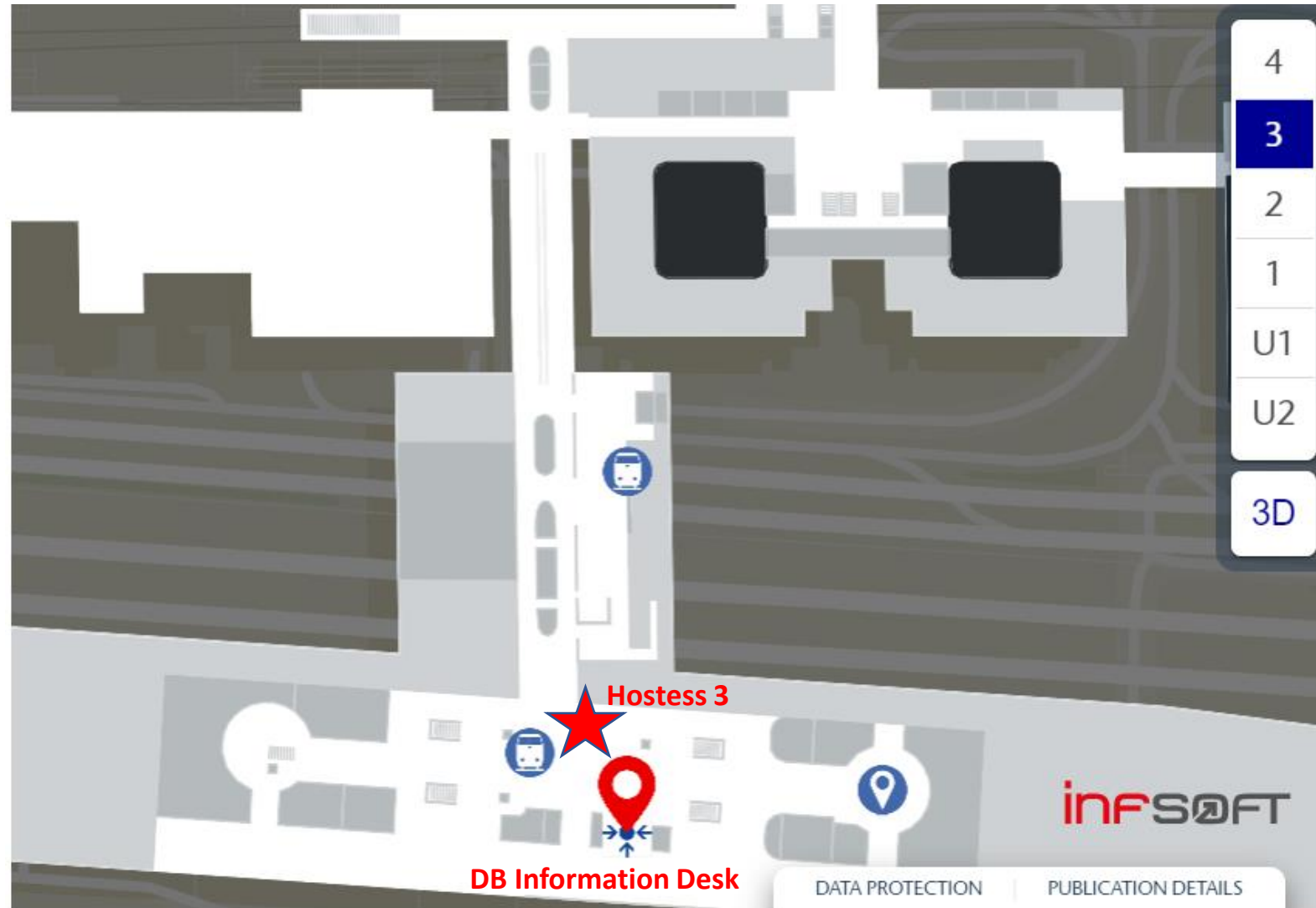




The hostess will help you to buy a ticket from Frankfurt Flughafen to Mannheim Hbf. Tickets can be purchased on the existing ticket machines our in the DB offices. Once you have a ticket take the escalators to Level 3, where the *Long Distance trains' station* is located. Follow the



The third hostess will be located at the DB Information Desk on this level. She can direct you to the platform you need to get to, give you information or help you buy a ticket.





# Purchasing a Ticket

Name of Station at Frankfurt Airport: **Frankfurt(M)Flughafen**

Name of Station in Mannheim: **Mannheim Hbf**

Duration: 35 minutes

Train type: ICE

Price: Between 20-40 EUR

15:24 ○ Frankfurt(M) Flughafen Fernbf Pl. Fern 5

ICE 577  
→ Stuttgart Hbf

32min Medium demand expected

Further information ▼

15:56 ● Mannheim Hbf Pl. 5

The screenshot shows a train search result. At the top, the departure station is 'Frankfurt(M) Flughafen Fernbf' at 15:24, with a 'Pl. Fern 5' label. Below this, the train is identified as 'ICE 577' with a destination of 'Stuttgart Hbf'. A duration of '32min' is shown next to a 'Medium demand expected' icon. A 'Further information' link with a dropdown arrow is present. At the bottom, the arrival station is 'Mannheim Hbf' at 15:56, with a 'Pl. 5' label.

# Mannheim Hbf

- Once you get off at Mannheim Hbf, exit the train station
- Dorint Hotel & Rosengarten Congress Center are a 10 minute walk (800 m straight line) from the train station
- Or take a Taxi



- Mannheim, Willy-Brandt-Platz 17, 68161 M
- Dorint Kongresshotel Mannheim, Friedric
- ⊕ Add destination

Options

Send directions to your phone

**via Kaiserring** 10 min  
800 m  
[Details](#)

**via Kaiserring and Friedrichsring/B38** 11 min  
850 m

**via Tattersallstraße** 13 min  
1.0 km

